



PUBLISHED BY: E.S.J. VAN DAM LTD, Box 300, Bridgenorth, Ontario, Canada K0L 1H0
 phone (705) 292 - 7013 toll free phone: 1 - 866 - EVANDAM (382-6326)
 email: erlingvandam@gmail.com www.canadarevenuestamps.com
 Member : A.S.D.A., C.S.D.A., A.P.S., B.N.A.P.S., R.P.S.C., A.R.A., C.R.S. etc. © 1970 - 2013



Dear Collector friends,
 I have recently started **DIGITAL INTERNET PRICELISTS** to give you even more choice and offers in full color and on a regular basis.

To receive these **FREE lists** you simply join our electronic on-line mailing list. Only you can subscribe/ unsubscribe. This mailing list is only used by me and will not be shared with anyone else. Just go to the main page on CANADAREVENUESTAMPS.COM and sign yourself up by clicking on "Join the mailing list". You can join/cancel any time.

Eventually our ReveNews newsletters, etc. will be all electronic. Printed copies will still be available for collectors who do not have access to the internet, however printed copies will only be available by subscription. Free mailed copies will continue to be available to regular active buyers only.

The cost of our printed newsletters is staggering and costs thousands of dollars for each issue for envelopes, printing, folding, inserting, postage, etc.

The cost of digital newsletters is virtually free. Please help keep costs & prices down by signing up for our electronic mailing list.

I am still working on replacement service for Registered mail. Apparently registered mail inside Canada is still okay as well as to selected countries, to USA is no longer reliable and now use Express Post, etc. **FOR MORE VALUABLE SHIPMENTS anywhere** I have generally switched to Express Post, Priority Post, Fedex, etc. Items shipped Overseas via Registered mail will be at your risk until I can establish that it is still secure to your country.

NEW - "CATALOGUE OF THE FEDERAL TOBACCO STAMPS OF CANADA by Christopher D. Ryan". This incredible lavishly fully illustrated catalogue is available from the main page of our website for **FREE download**.

If you call & get my voice mail, please leave a detailed message with items you wish to order, **credit card #, expiry date, name on card + 3 digit security code from reverse**. Usually I respond within 24 - 48 hours unless I am out of town, in which case I will contact you upon my return. **Cdn\$ and US\$ exchange rate fluctuates a lot. For the convenience of our US customers I will accept check/draft/cash payments in US\$ and Cdn\$ at par. Exchange rate subject to change without notice.** All prices shown are in Cdn\$. It is easiest to pay by credit card, your card company will handle exchange rate.

All credit card transactions processed in Cdn\$.
 visit

CANADAREVENUESTAMPS.COM

16000 items listed

the #1 source for Canada revenues, Telephone & Telegraph Franks, Duck stamps, Wildlife Conservation stamps & Canadian Semi-Official Air Mail stamps & covers.

I look forward to receiving your order.

Erling van Dam

I WILL HAVE A BOOTH AT THIS SHOW

August 30 - Sept 1, 2013
BNAPEX 2013 at Rodd Royalty Hotel,
14 Capital Drive, Charlottetown, PEI

www.canadarevenuestamps.com

Satisfaction Guaranteed
 or money refunded

1934 - 39 Quebec Unemployment Relief forgeries used by bootleggers

during prohibition to make their moonshine appear genuine for their U. S. customers.

This is the most spectacular collection I have ever seen (43+ years).

The collection clearly shows the progression of the quality of stamps produced by the bootleggers with their final product appearing almost perfect, but still rouletted instead of perforated.

This one of a kind collection - \$1995



QU2 actual unused stamp

QU2 **FORGERY** mint never hinged - very RARE

QU2 genuinely used rouletted **FORGERY** - extremely RARE



QU3 actual used stamp

QU3 **FORGERY** genuinely used crudely produced with coarse rouletted . **EXTREMELY RARE**

QU3 **FORGERY** genuinely used coarse x fine rouletted **EXTREMELY RARE**



QU3 aniline **FORGERY** genuinely used. Fine rouletted . **EXTREMELY RARE**

QU3 **FORGERY** unused. Fine rouletted. scarce

QU3 **FORGERY** genuinely used. Fine rouletted. very RARE



Cape Breton - NSC11a - Provisional Law Stamp - with stamped purple "Fifty Cents" value.

Spectacular copy of this great rarity. Horizontal document fold at bottom of stamp in red border just above the perfs and well clear of the white part of the stamp design. Includes our colour photo certificate of authenticity.

Cat. \$4500

1 of only 2 copies known
 - \$3495 -

convenient payment terms available



FSC18*NH - \$1 blue without control numbers F/VF, Spectacular 1935 King Geo. V. design - \$599



1876 Young Queen Victoria CANADA SUPREME COURT FSC2P - 20c lilac.

Spectacular Plate Proof on India paper, tiny india paper thin as is normal and mentioned for the record only - \$1295

ORDERING INFORMATION

Satisfaction Guaranteed or Money Refunded.

Payment with order please, interest free terms may be arranged on large purchases.

Prices in Canadian \$, unless noted otherwise. **MINIMUM Credit card order \$15**

Cdn \$100 = approximately US\$100

Rate subject to change without notice.

NEW !!!!

POSTAGE & PACKING

Orders under \$250 - to Canada add \$2,

to USA add \$3, all other countries \$5

ORDERS \$250 and up

Registered Mail - Canada \$12, Overseas \$25

Expresspost to Canada rate depends on loca-

tion - \$12 (regional) or \$18 (national)

Registered mail not available to USA

Add \$25 for Express post to USA

Add \$60 for Express post to Overseas.

Orders over \$750 - we pay shipping

Orders shipped Express/Priority post, Fedex.

Registered are covered by our insurance policy.

All credit card transactions processed in Canadian

\$ and are converted by your card company to your

currency. Minimum credit card transaction \$15.00



Immediate Refund - for items sold out.

Refunds under \$10 - will be made in mint

Canadian postage stamps at face value,

Canadian Customers: add 5% GST

B.C. residents: add 5% GST

Maritime & Ontario clients add 13% HST

Items purchased on payment plan will be shipped

once payment in full has been received.

SUBSCRIPTION INFORMATION

we do not send out renewal notices!

IF ADDRESS LABEL READS "exp 07/13"

(July 2013) or earlier or is **highlighted in yellow** then **your subscription has expired.**

To continue receiving ReveNews bulletins, price lists, etc. please make a purchase from

this newsletter or send your subscription fee in the amount shown below. Paid subscriptions

are extended for one full year.

ANNUAL SUBSCRIPTION RATES

B.C., Ontario - Cdn \$28.20 (incl. HST)

Maritimes - Cdn \$28.20 (incl. HST)

rest of Canada - Cdn \$26.75 (incl. GST)

USA - C\$36, **rest of World** - C\$50

The 2009 Canadian revenue

stamp catalogue by E.S.J. van Dam

in stock for immediate delivery

The *definitive catalogue* for

Canada & provinces Revenues,

Telephone & Telegraph franks,

Duck, hunting & Wildlife Conservation stamps.

Spiral bound - 180 pages - 960 colour photos

to BC, Ontario & Maritimes incl. HST Cdn \$28.19

rest of Canada incl GST Cdn \$26.20

to USA Cdn \$28.95

Overseas Cdn \$36

prices include Air Mail shipping

+ applicable taxes

New in Stock - Lots, collections, documents, unusual items, etc. Some great buys here - these will not last.

- Supreme Court of the Northwest Territories** Judicial district of Western Assiniboia July 23, 1907. Complete legal size document "ORDER" with **SL2** - 10c and scarce **SL7** - \$1 both on front. Very early usage, unpunched with scarce manuscript "**cancelled CHB**". At top upper left is large colourless embossed "Supreme Court of the North West Territories" court seal. \$1 values are very rare on document. Exceptionally nice condition. **Should be worth a minimum of double cat. = \$490 \$395**
- BCL26**-\$1 blue & **BCL27**-\$5 crimson on small VF 1927 British Columbia Supreme Court Praecepte with nice clear oval "Victoria, Jan 12, 1927, Registry" cancels. \$5 is scarce on document \$29
- FX10** - 60c blue x 2 on 1938 Oliver Co share certificate. I rarely see share certificates with revenues \$29
- Similar share certificate but with **FX62**-2c (faulty), **FX71**-10c x 2 & **FX79**-30c blue. Scarce \$35
- SL4** - 25c green with "C"annington punch on small 1908 Saskatchewan promissory note. Nice..... \$25
- FB39** - 2c orange on attractive 1877 Kings College, Windsor, Nova Scotia receipt for scholarship. A lovely early item from a famous Canadian College showing a nice college Coat of Arms \$20
- Canadian Pacific Railway** 1951 "Statement of Account" re: dividend on 10 shares to British citizen. Affixed **FX64** - 3c blue with **CPR perfin** + **British Geo. VI. 2d brown postage/revenue** stamp. This is the only such cross border usage document I have seen. Document background consists of multiple CPR logos with a beaver on top of each. very attractive. **FX64** has Lloyds Bank Ltd cancel.... \$159
- OL47** - 10c red on 1870 printed "SPECIAL SUMMONS" in the 7th division court in the county of Waterloo. Nice fresh and clean condition. **143 years old.** reasonable at \$25
- 4 documents as above, but each with different value(s) affixed includes **OL48**-20c, **OL49**-30c, **OL52**-50c + **OL47** & **48** - 10c & 20c to make up the 30c rate. An attractive clean & scarce group of early documents. **143 years old - very reasonable at** \$95
- NFR2** - 10c brown, **NFR3** - 25c blue, **NFR6** - \$1 green x 7 on multi page 1904 **Newfoundland** "Bill of Sale" document. **NEWFOUNDLAND** Queen Victoria Inland revenue stamps on document are rarely offered. Fine used. Was fair at \$695... now only \$595
- FCH3a** very rare 3c red embossed without "CC" below maple leaves on complete **Salada Tea Co** note with original authorization attached to back and unusual thus. cat. \$175..... \$125
- FCH3a** very rare 3c red embossed without "CC" below maple leaves on complete 1933 **Imperial Tobacco** 30 day note. Additional **FX38**-3c excise affixed as well as amount is over \$100. Cat \$175.... \$125
- FCH5a** - **3c red embossed** + **FX64** - **3c excise tax** on fancy **Salada Tea Company** draft. Extra 3c had to be added because draft amount is over \$100. Nice item..... \$25
- FCH5a** - **3c red embossed** + **FX64** - **3c excise tax** on fancy **Imperial Tobacco Company** draft. Extra 3c had to be added because draft amount is over \$100. Nice item..... \$20
- FCF3**-\$1 orange Consular Fee on partial document with "**PARIS CANADIAN CONSULATE**" cancel. The stamp catalogs \$50 and is worth even more with this cancel. My price just \$35
- FX96a**-3c blue excise tax coil pair on 1940's Alexander Fleck Ltd. check. Should retail for \$32..... \$15
- BCL41**-10c grey pair used on small 1955 County Court "Praecepte" nice Chilliwack oval cancel \$10
- BCL43**-\$1 blue on small 1955 Supreme Court "Praecepte" nice Chilliwack oval cancel..... \$10
- BCL45**-\$2 magenta on small 1955 **County** Court "Praecepte" nice Chilliwack oval cancel..... \$10
- BCL45**-\$2 magenta on small 1955 **Supreme** Court "Praecepte" nice Chilliwack oval cancel..... \$8
- BCL49**-\$1 Centennial issue on small 1958 Supreme Court "Praecepte" nice Chilliwack oval cancel Documents of the Centennial issue are not very common..... \$25
- BCL56**-\$5 brown on small 1978 County Court form similar to Praecepte. Nice Chilliwack oval cancel. \$5 brown is rare on document, VF \$65
- BCL56**-\$5 brown + **BCL60**-\$2 magenta rouletted on small 1978 **County** Court form similar to Praecepte. Nice Chilliwack rectangular cancel. Both stamps are rare on document, VF \$65
- BCL57**-\$10 red on small 1974 **Supreme** court form similar to Praecepte. **Square purple "Terrace Registry" cancel.** The only such cancel I have seen in 43 years \$100
- BCL57**-\$10 red + **BCL58**-\$20 blue on attractive partial "**Supreme Court of British Columbia - Petition for Divorce**" document. **Blue** rectangular 1977 Chilliwack Registry cancel. \$85
- BCL57**-\$10 red + **BCL58**-\$20 blue on attractive partial "**Supreme Court of British Columbia - Petition for Divorce**" document. **Black** rectangular 1977 Chilliwack Registry cancel..... \$85
- BCL59**-\$1 blue rouletted on small 1978 **County** Court form similar to Praecepte. Nice blue oval Chilliwack Registry cancel. This issue rare on document, VF \$25
- BCL59**-\$1 blue rouletted on small 1978 **Supreme** Court form similar to Praecepte. Nice blue oval Chilliwack Registry cancel. This issue rare on document, VF \$25
- BCL59**-\$2 magenta rouletted on small 1978 **County** Court form similar to Praecepte. Nice blue oval Chilliwack Registry cancel. This issue rare on document, VF \$35
- BCL59**-\$2 magenta rouletted on small 1978 **Supreme** Court form similar to Praecepte. Nice blue **rectangular** Chilliwack Registry cancel. This issue rare on document, VF \$35
- OL6**-50c L.S. + **OL36**-50c C.F. on 1865 Upper Canada "Writ of Summons - **British Subject out of Jurisdiction**". Nice mixed usage. Very unusual document \$50
- 1927 Canadian General Electric stock certificate for 2 shares with **QST10** - 2c blue Quebec stock transfer affixed. Attractive \$50

CANADA REVENUE COLLECTING STARTER KIT

4 VOLUME Canada revenue stamp album by E. S. J. van Dam - price to Canada \$200 or \$220 to USA current **Canadian Revenue Stamp catalogue** by E.S.J. van Dam - retail value \$21.95

100 different Canada revenue stamps - retail value - \$39.95
Regular total retail value \$261.90 to Canada and \$281.90 to USA

VERY SPECIAL OFFERS

4 VOLUME Canada revenue album + current Canada revenue catalog + 100 different Canada revenues for delivery to **Canada - only \$210, SHIPPING AND APPLICABLE TAX INCLUDED - YOU SAVE \$51.90** for delivery to **USA - only \$220 - SHIPPING INCLUDED - YOU SAVE \$61.90**

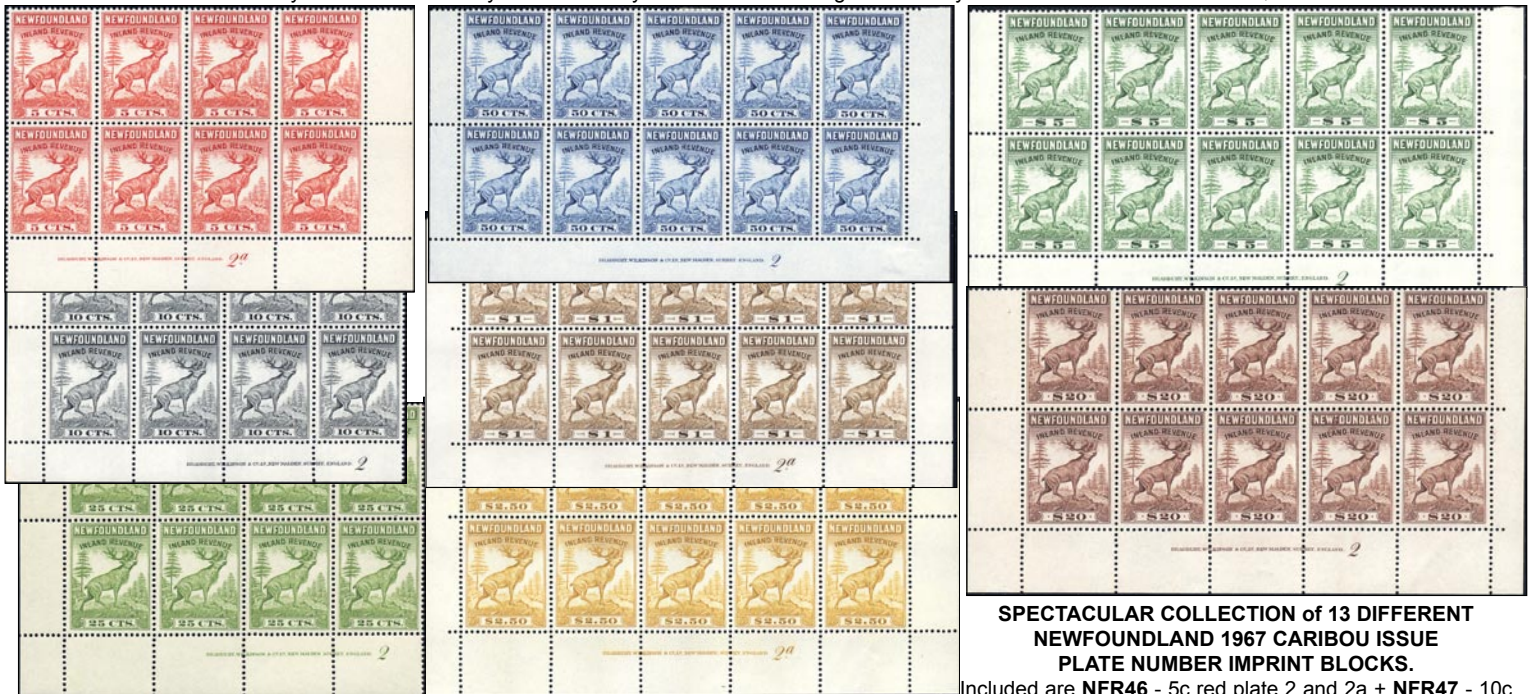
-- no further discounts on these specials --



QUEBEC 1913 Bilingual Stock Transfer collection of Plate number IMPRINT BLOCKS in pristine condition. 9 different imprint blocks 1c to \$30, no \$2. QST9-15, 17-18 Very fresh *NH. The high values are extremely rare. Should be worth at least cat \$2539 + 25%=\$3174. Possibly unique collection - \$1895



1865 Second Bill issue plate PROOFS on india paper. The complete set in color of issue. The 20c doesn't exist thus. A lovely fresh set of this very attractive early Queen Victoria design. Printed by the American Bank Note Co - \$329



SPECTACULAR COLLECTION of 13 DIFFERENT NEWFOUNDLAND 1967 CARIBOU ISSUE PLATE NUMBER IMPRINT BLOCKS.

Included are **NFR46** - 5c red plate 2 and 2a + **NFR47** - 10c black plate 2 and 2a + **NFR48** - 25c green plate 2 and 2a + **NFR49**-50c blue plate 2 and 2a + **NFR50** - \$1 brown plate 2 + **NFR51** mustard - \$2.50 plate 2a + **NFR52** - \$5 green plate 2 and 2a + **NFR53** - the very rare \$20 brown plate 2. An extremely rare collection. F/VF NH condition, except for a very light hinge on 1 x \$5 stamp in plate 2. **This issue is very much undervalued.** It was only in use and for sale in Newfoundland for a very short time and withdrawn from sale without notice. Only a sampling of the blocks shown. Catalog value just as single stamps is \$7400 and can easily add another \$1500 for the value of the imprints for total of \$8900.

A spectacular lot of 13 different Plate # IMPRINT BLOCKS - very attractive stamps - \$5500



1940 New Brunswick Laws NBL13-18 complete F/VF*NH 10c-\$5. This set is rarely offered complete - \$250

1902 YUKON - DAWSON MINING COURT COMPLETE USED YL1 - 6, 10c - \$3 vermilion. A well centered and fresh set of this issue. Each has the small type "cancelled" perfin. \$3 ironed out document fold + small corner crease. Seldom seen complete. Cat. value \$1060\$695



1880, 1883 - Collection of 15 different Canada cigarette stamps. Includes perforated, imperf, red, blue and black stamps. Includes strips with control number, without control number, printed on reverse, etc. Lovely group in pristine condition. 15 different - \$99.95



1897 CANADA TWIST TOBACCO STAMPS

Ryan Catalog numbers RT213, 214 + 215. Complete set of 3 values 1/4 lb, 1/2 lb and 1 lb green singles with red control numbers. Spectacularly engraved & printed by American Bank Note Co. VF mint, as issued without gum - singles \$35 vertical pairs - \$65



1897 CANADA TWIST TOBACCO STAMPS without control numbers - Ryan cat. RT213n, 214n, 215n
Complete set of 3 values 1/4 lb, 1/2 lb & 1 lb green. VF mint, **singles** as issued without gum - \$50



NT201* - 2 ozs blue, red control #, imperf **NEWFOUNDLAND** Tobacco stamp. Engraved & printed by the British American Bank Note Co, Ottawa. Pristine mint, no gum as issued. **imperf single** - \$85 or **imperf pair** as shown \$150



NT201CP* - 2 ozs blue, red control #, imperf **NEWFOUNDLAND** Tobacco stamp. Same as NT201 with additional purple "CANCELLED" handstamp. Pristine mint, no gum as issued. **imperf single** - \$25. **Imperf pair** - \$45



NEWFOUNDLAND NT204CP - green, no value, red control # rouletted, large purple "cancelled". Issued without gum. VF mint **single** \$60 VF mint **pair** - \$110



Ryan RC207 - Brandom C306a - the extremely rare black 50 cigarettes "OVER 3 POUNDS PER 1000". Perf 12. Used on cigarettes made from foreign leaf. Additionally the stamp is overprinted "SPECIMEN" in red. Many years ago I had one single used copy of this stamp and already then it sold for \$100. This stamp is mint never hinged. Unlisted as a specimen in both catalogs. Printed & Engraved by American Banknote Co. A great rarity - \$150



Ryan RC208 - Brandom C307 - the extremely rare black 100 cigarettes "OVER 3 POUNDS PER 1000". Perf 12. Used on cigarettes made from foreign leaf. Additionally the stamp is overprinted "SPECIMEN" in red. Many years ago we had a single used copy of this stamp and already then it sold for \$100. This stamp is mint never hinged. Unlisted as a specimen in both catalogs. Printed & Engraved by American Banknote Co. A great rarity - \$150



Series of 1897 cigarette stamps. Mint never hinged overprinted with large red "SPECIMEN".

Printed & Engraved by American Bank Note Company
 Ryan RC128 - Brandom C261 6c black \$12.50
 Ryan RC131 - Brandom C263 7c black \$12.50
 Ryan RC154 - Brandom C280 7c red \$12.50

Special Offer
buy all 3 different singles for only \$30, Blocks of 4 - \$100



Ryan RC202 - Brandom C304* extremely rare black 10 cigarettes "OVER 3 POUNDS PER 1000" used on cigarettes made from foreign leaf. Mint never hinged. Additionally this item is overprinted "SPECIMEN" in red. Have only seen a few in 43+ years. Unlisted as a specimen in both catalogs. Printed & engraved by ABN Co. A great Rarity - \$150



Ryan RC204 - Brandom C305 very rare black 20 cigarettes "OVER 3 POUNDS PER 1000" used on cigarettes made from foreign leaf. Mint never hinged. Additionally this item is overprinted "SPECIMEN" in red. Have only seen a few in 43+ years. Unlisted as specimen in both catalogs. Printed & engraved by ABN Co. Very Rare - \$95



1945 Newfoundland - Brandom NT163 no value, red brown, cigarette importation stamp, red #'s, imperf - \$10



SE10a - 50c black and blue VF used with **PINPERFS** cat. value \$50 1/2 price - \$25



SE13 major colour shift gray background is shifted to the left leaving a white vertical border at right and white space to left of coat of arms, etc. - \$99

DISCOUNTS THIS PAGE: over \$50 - 5% discount, over \$500 - 10% over \$2500 - 15%, over \$7500 - 20%

PROVINCIAL WILDLIFE FIRST DAY COVERS - 50% OFF SALE - Prices in 2nd column are the Special prices. The organization responsible for the production of these magnificent covers has asked me to sell the small remaining stock of covers in their archives. Some are sold out. Quantities are limited. All sold on a first come first served basis.

MANITOBA WILDLIFE CONSERVATION



Polar Bear by Tom Mansanarez

..... cat. value **50%**
 MWF1d 1994 First day cover sold out
 MWF1e 1994 artist signed (60) 64.00 32.00



Whitetail Deer by Hayden Lambson

MWF2d 1995 First Day cover .. 50.00 25.00
 MWF2e artist signed (65)..... 58.00 29.00



Lynx by Glenn Olson

MWF3d 1996 First Day cover .. 47.00 23.50
 MWF3e artist signed (65)..... 52.00 26.00



Falcon by Yvette Lantz

MWF4d 1997 First Day cover .. 42.00 21.00
 MWF4e artist signed (75)..... 47.00 23.50



Moose by Trevor V. Swanson

MWF5d 1998 First Day cover .. 38.00 19.00
 MWF5e artist signed (75)..... 42.00 21.00



Bison by Trevor V. Swanson

MWF6d 1999 First Day cover .. 34.00 17.00
 MWF6e artist signed (50)..... 38.00 19.00



Canada Goose by Nanci Harlin

MWF7d 2000 First Day Cover.. 32.00 16.00
 MWF7e artist signed (40)..... 38.00 19.00



Red Head Duck by Fariad

MWF8d 2001 First Day cover .. 30.00 15.00
 MWF8e artist signed (40)..... 36.00 18.00



Eared Grebe by David J. Perkins

MWF9d 2002 First Day cover .. 30.00 15.00
 MWF9e artist signed (40)..... 36.00 18.00



Grey Squirrel by Rebecca Latham

MWF10d 2003 First Day cover . 30.00 15.00
 MWF10e artist signed (40)..... 36.00 18.00



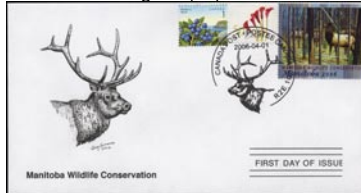
Wood Duck by David J. Perkins

MWF11d 2004 First Day cover .. 30.00 15.00
 MWF11e artist signed (40)..... 36.00 18.00



Wolves by Bernadette Gangel

MWF12d 2005 First Day cover . 30.00 15.00
 MWF12e artist signed (40)..... 36.00 18.00



Elk by Cynthia Fisher

MWF13d 2006 First Day cover . 30.00 15.00
 MWF13e artist signed (40)..... 36.00 18.00

NEW BRUNSWICK CONSERVATION FUND

NBW1d 1994 first Day cover..... sold out
 NBW1e artist signed sold out



Eastern Cougar by Tom Mansanarez

NBW2d 1995 First Day cover .. 52.00 26.00
 NBW2e artist signed (65)..... 58.00 29.00



Moose by David MacIntosh

NBW3d 1996 First Day cover .. 47.00 23.50
 NBW3e artist signed (65)..... 52.00 26.00



Pheasant by Craig Phillips

NBW4d 1997 First Day cover .. 42.00 21.00
 NBW4e artist signed (70)..... 47.00 23.50



Rainbow Trout by R. Jenkins

NBW5d 1998 First Day cover .. 38.00 19.00
 NBW5e artist signed (75)..... 42.00 21.00



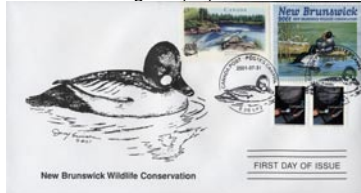
Wood Duck by D. N. Miller

NBW6d 1999 First Day cover .. 34.00 17.00
 NBW6e artist signed (50)..... 38.00 19.00



King Eider by Cynthia Fisher

NBW7d 2000 First Day cover .. 32.00 16.00
 NBW7e artist signed (40)..... 38.00 19.00



Common Golden Eye by David J. Perkins

NBW8d 2001 First Day cover .. 30.00 15.00
 NBW8e artist signed (40)..... 36.00 18.00



White Tail Deer by Hayden Lambson

NBW9d 2002 First Day cover .. 30.00 15.00
 NBW9e artist signed (40)..... 36.00 18.00



Green-Winged Teal by Karen Latham

NBW10d 2003 First Day cover . 30.00 15.00
 NBW10e artist signed (40)..... 36.00 18.00



Northern Pintail by John N. Harris

NBW11d 2004 First Day cover . 30.00 15.00
 NBW11e artist signed (40)..... 36.00 18.00



Common Merganser by Mark Hobson

NBW12d 2005 First Day cover . 30.00 15.00
 NBW12e artist signed (40)..... 36.00 18.00



Bald Eagles by Mark Mittlesteadt

NBW13d 2006 First Day cover . 30.00 15.00
 NBW13e artist signed (40)..... 36.00 18.00



White Tail Fawn by Jerry Gadams

NBW14d&e 2007 FDC sold out
NEWFOUNDLAND & LABRADOR



Plateau Stag by Mia Lane

NLW1d 1994 First Day cover . 58.00 29.00
 NLW1e artist signed (50)..... 64.00 32.00



Common Golden Eyes by Mia Lane

NLW2d 1995 First Day cover . 52.00 26.00
 NLW2e artist signed (65)..... 58.00 29.00



Moose by W. Fraser Sandercombe

NLW3d 1996 First Day cover . 47.00 23.50
 NLW3e artist signed (65)..... 52.00 26.00

..... to be continued

SPECIAL - PROVINCE OF QUEBEC REVENUE STAMPS

All are typical VG/Fine used - without faults. Quebec revenues are generally not well centered. Prices are for the most common variety - my choice. Many perforation and other varieties as well as Very Fine and mint are available - prices on request or check our website. All offered subject unsold. Prices subject to change.

QUEBEC LAW STAMPS

1864 Law Stamps - Lower Canada overprinted red L.C.



QL1 10c	green	1.50
QL2 20c	green	2.44
QL3 30c	green	6.75
QL4 40c	green	30.00
QL5 50c	green	1.88
QL6 60c	green	18.75
QL7 70c	green	35.00
QL8 80c	green	7.50
QL9 90c	green	40.00
QL10 \$1	green & black	2.25
QL11 \$2	green & black	15.00
QL12 \$3	green & black	25.00
QL13 \$4	green & black	30.00
QL14 \$5	green & black	22.50



1871-90 Law Stamps

QL15 10c	red	0.38
QL16 20c	red	0.75
QL17 30c	red	0.56
QL18 40c	red	0.75
QL19 50c	red	0.56
QL20 60c	red	1.13
QL21 70c	red	1.88
QL22 80c	red	1.13
QL23 90c	red	3.75
QL24 \$1	blue	0.75
QL25 \$2	blue	1.50
QL26 \$3	blue	10.00
QL27 \$4	blue	9.00
QL28 \$5	blue	7.50
QL29 \$10	yellow	75.00
QL30 \$20	green	250.00
QL31 \$30	slate purple	93.75



1893-1906 Law Stamps

QL32 10c	grey violet	0.38
QL33 20c	grey violet	0.38
QL34 30c	grey violet	0.45
QL35 40c	grey violet	0.94
QL36 50c	grey violet	0.38
QL36a 50c	light brown	35.00
QL37 60c	grey violet	1.88
QL38 70c	grey violet	1.88
QL39 70c	blue	27.50
QL40 80c	grey violet	2.25
QL41 80c	blue	25.00
QL42 90c	grey violet	3.75
QL43 \$1	green	0.56
QL44 \$1	carmine	65.00
QL45 \$2	green	1.88
QL46 \$2	brown	35.00
QL47 \$3	green	5.63
QL48 \$3	orange	75.00

QL49 \$4	green	11.25
QL50 \$4	brown	48.75
QL51 \$5	green	3.00
QL52 \$5	carmine	60.00
QL53 \$10	blue	11.25
QL54 \$20	yellow	15.00
QL55 \$30	vermillion	30.00



1912 Law Stamps.

Many values come in perf. 11 and 12.
Prices shown are for most common variety.

QL56 10c	green	0.38
QL57 20c	blue	0.38
QL58 30c	orange	0.38
QL59 40c	brown	0.56
QL60 50c	black	0.38
QL60a	hairlines	15.00
QL61 60c	olive	1.50
QL62 70c	bistre	3.00
QL63 80c	brown	2.63
QL63a	hairlines	15.00
QL64 90c	red brown	13.13
QL65 \$1	red	0.19
QL65a	orange	0.75
QL66 \$2	purple	5.63
QL67 \$3	green	9.38
QL68 \$4	grey	13.13
QL69 \$5	blue	9.38
QL70 \$10	violetbrown shades	150.00
QL71 \$20	red brown, mint NH	175.00
QL72 \$30	olive	150.00



1923 "HONORAIRES-FEES" overprint

QL73 10c	green	0.19
QL74 20c	blue	0.19
QL74a	hairlines	15.00
QL74b	bluish paper	10.00
QL75 30c	orange	0.19
QL76 40c	brown	0.75
QL77 50c	black	0.26
QL78 60c	olive	9.00
QL79 70c	bistre	7.50
QL80 80c	brown	4.50
QL81 90c	red brown	6.00
QL82 \$1	red (shades)	0.56
QL82c	orange	2.63
QL83 \$2	purple	2.06
QL84 \$3	green	6.38
QL85 \$4	grey	7.50
QL86 \$5	blue	11.25
QL87 \$10	violet brown (shades)	75.00
QL89 \$30	olive	55.00



1923 "BANKRUPTCY-LOI DE FAILLITE" on 1912 laws

QL90 10c	green	41.25
QL91 20c	blue	3.75
QL92 40c	brown	3.38
QL93 50c	black	4.50
QL94 \$1	red (shades)	4.50
QL94a	orange	7.50
QL95 \$2	purple	4.88
QL96 \$3	green	300.00
QL97 \$4	grey	45.00
QL98 \$5	blue	70.00
QL99 \$10	brown	150.00



1923 LOI DE FAILLITE-BANKRUPTCY ACT

QL100 10c	green, p.11	85.00
QL101 20c	blue, p.11	26.25
QL101a	bluish paper, p.11	56.25
QL102 40c	brown, p.11	37.50
QL103 50c	black, p.11	75.00
QL104 \$1	orange, p.11	26.25
QL105 \$2	purple, p.11	56.25
QL106 \$3	green, p.11	45.00
QL107 \$4	grey, p.11	75.00
QL108 \$5	blue, p.12	150.00



COAT OF ARMS ISSUE

QL109 10c	green & black	15.00
QL110 20c	green & black	7.50
QL111 30c	green & black	7.50
QL112 40c	green & black	3.75
QL113 50c	green & black	3.75
QL115 \$1	green & black	93.75
QL116 \$2	green & black	18.75



"HONORAIRES-FEES" overprint

QL117 \$1	green & black, *NH	35.00
-----------	--------------------	-------



"BANKRUPTCY ACT-LOI DE FAILLITE" o/p

QL118 50c	green & black, *NH	60.00
QL119 \$1	green & black, *NH	49.00



1866 REGISTRATION STAMPS

QR1 5c	red brown	5.63
QR1a 5c	vermillion	6.75
QR2 15c	red brown	20.00
QR2a 15c	vermillion	5.63
QR3 30c	red brown	25.00
QR3a 30c	vermillion	9.38



1870 BEAVERS

QR4 2c	green	200.00
QR5 5c	green	0.23
QR6 15c	green	0.23
QR7 30c	green	0.75
QR8 30c	blue	3.00
QR9 50c	green	7.50
QR10 50c	black	9.38
QR11 \$1	orange	2.25
QR12 \$1	carmine	7.50
QR13 \$2	orange	6.75
QR14 \$2	brown	4.50
QR15 \$5	orange	26.25



1912 REGISTRATION

QR16 5c	black	0.56
QR17 10c	bistre	0.38
QR18 15c	green	6.00
QR19 20c	green	0.38
QR20 30c	blue	0.38
QR21 50c	brown	0.38
QR22 \$1	olive green	0.56
QR23 \$2	red brown	0.56
QR24 \$5	brown	2.63
QR25 \$5	purple	2.81
QR26 \$20	yellow	15.00
QR27 \$50	orange	93.75
QR28 \$100	carmine	37.50

SAME DESIGN with "LTD" in imprint

QR29 \$2	brown	1.13
----------	-------	------



1962 COAT OF ARMS ISSUE

QR30 10c	brown & black	5.63
QR31 20c	brown & black	11.25
QR32 30c	brown & black	3.75
QR33 50c	brown & black	3.75
QR34 \$1	brown & black	3.75
QR35 \$2	brown & black	7.50
QR36 \$5	brown & black	7.50



1876 LICENSE STAMPS - ASSURANCE

QA1-15 typically have pinholes and light fold
The occasional faultless copy available at a premium, price on request

QA1 1c	green	9.38
QA2 2c	green	9.38
QA3 3c	green	9.38
QA4 4c	green	13.13
QA5 5c	green	15.00
QA6 10c	green	15.00
QA7 20c	green	16.88
QA8 30c	green	26.25
QA9 40c	green	37.50
QA10 50c	green	37.50
QA11 \$1	violet	115.00
QA12 \$2	violet	750.00
QA13 \$3	violet, p.12	750.00
QA15 \$5	violet, p.12	800.00



1889-1906 LICENSES

QA16 \$2	brown	1.88
QA17 \$7	green	115.00
QA18 \$25	red	30.00



1893-1912 HANDSTAMPED "LICENSES"

QA19	red o/p on QL51(\$5 green)	15.00
------	----------------------------	-------

DISCOUNTS THIS PAGE:

over \$50 - 5% discount, over \$500 - 10%
over \$2500 - 15%, over \$7500 - 20%

QA19a	purple o/p on QL51	33.75
QA20	red o/p on QL52 (\$5 red)	16.88
QA20a	black o/p on QL52	9.38
QA20b	purple o/p on QL52	11.25
QA21	red o/p on QL69 (\$5 blue)	9.38
QA21a	purple o/p on QL69	18.75



1907 STOCK TRANSFER

QST1	2c	blue	8.25
QST2	10c	carmine	11.25
QST3	20c	black	22.50
QST4	50c	yellow	50.00
QST5	\$1	red	22.50
QST6	\$2	brown	33.75



1913 BILINGUAL STOCK TRANSFER

QST9	1c	violet	4.50
QST10	2c	blue	0.38
QST11	3c	carmine	1.88
QST12	10c	olive	0.38
QST13	20c	slate	0.38
QST14	50c	buff (shades)	1.88
QST15	\$1	red	1.88
QST16	\$2	brown	1.88
QST16a	\$2	red brown	1.88
QST17	\$10	purple	26.25
QST18	\$30	green	48.75



QUEBEC 1919 PROHIBITION STAMPS

These are without the usual folds, thins, etc.

QP1	1c	orange	26.25
QP2	2c	blue	15.00
QP3	5c	light brown	11.25
QP4	10c	bistre brown	48.75
QP5	10c	black	18.75
QP6	20c	vermilion	33.75
QP7	50c	dark brown	125.00
QP8	\$1	olive green	225.00
QP9	\$5	blue green	1000.00
QP10	\$10	blue violet	1000.00



1934-39 UNEMPLOYMENT INSURANCE

QU1	5c	orange	0.38
QU2	10c	olive green	0.75
QU3	15c	violet	0.94



1958 VACATION PAY

QV1	1c	ochre	3.38
QV2	2c	red	3.38
QV3	5c	orange	4.50
QV4	10c	grey black	4.88
QV5	25c	brown	12.50
QV6	50c	green	20.00
QV7	\$1	blue	60.00

TEMPORARY VACATION PAY

QV10	1c	ochre, MINT *NH	130.00
------	----	-----------------	--------



LA CAISSE POPULAIRE - DESJARDINS

QCP1	1c	red	7.50
QCP2	5c	blue	10.00
QCP3	10c	brown	80.00
QCP4	25c	green	9.00
QCP5	1c	red	300.00

PROVINCE OF ONTARIO

All are typical Fine used - without faults. Ontario revenues are generally not well centered. Prices are for the most common variety - my choice. Many perforation and other varieties as well as Very Fine and mint are available - prices on request or check our website. All offered subject unsold.

Prices subject to change.



OL46	5c	red	6.00
OL47	10c	red	0.20
OL48	20c	red	0.20
OL49	30c	red	0.38
OL50	30c	green (pinhole as usual)	85.00
OL51	40c	red	0.38
OL52	50c	red	0.38
OL53	60c	red	1.88
OL54	70c	red	10.00
OL55	80c	red	7.50
OL56	90c	red	15.00
OL57	\$1	red	0.38
OL58	\$2	red	0.75
OL59	\$3	red	15.00
OL60	\$4	red	18.75



1931 LAW STAMPS

OL61	\$4	green on green paper	6.00
OL62	\$5	blue	9.38
OL63	\$10	orange	11.25
OL64	\$20	brown	22.50
OL65	\$50	purple	52.50



1929-40 LAW STAMPS

OL66	5c	violet	9.38
OL67	10c	green	0.38
OL68	20c	black	0.38
OL69	20c	yellow	0.38
OL70	30c	black	0.38
OL71	30c	indigo	1.50
OL72	50c	olive green	0.94
OL73	50c	red	0.38
OL74	\$1	orange red	3.50
OL75	\$1	blue on flesh	0.60
OL75a	\$1	blue on pink	1.50
OL76	\$2	brown	1.88
OL77	\$2	blue/pale turquoise	0.56
OL78	\$3	yellow brown	3.75
OL79	\$3	blue on green	1.69
OL81	\$4	grey	9.38
OL82	\$4	blue on orange	0.75
OL82a	\$4	blue on yellow	0.75
OL83	\$5	red brown	15.00
OL84	\$5	blue on blue	2.25
OL85	\$5	sepia	11.25
OL85a	\$5	olive sepia	15.00
OL86	\$10	red	26.25
OL87	\$10	blue	22.50
OL87a	\$10	slate blue	37.50
OL88	\$10	blue on red	11.25
OL88a	\$10	blue on orange red	11.25
OL89	\$50	dark brown	200.00
OL90	\$50	blue on orange	168.75

DISCOUNTS THIS PAGE:

over \$50 - 5% discount, over \$500 - 10% over \$2500 - 15%, over \$7500 - 20%



1910-26 ONTARIO STOCK TRANSFER

OST1	2c	pale red	3.00
OST1a	2c	carmine	2.50
OST2	3c	on 2c overprint	1.90
OST3	3c	green	0.56
OST4	10c	dark green	8.00
OST5	15c	bistre brown	0.75
OST6a	20c	dark brown	7.50
OST7	30c	blue	0.75
OST9	60c	olive green	1.00
OST10	\$1	blue	15.00
OST11	\$1.50	red	3.75
OST12	\$2	olive green	33.75
OST13	\$3	brown	3.75
OST14	\$10	orange	40.00
OST15	\$15	violet	11.25



1926 "STOCK TRANSFER TAX" overprint

OST16	3c	on 2 1/2 mills	1.50
OST17	6c	blue	2.75



1935 ONTARIO STOCK TRANSFER

OST18	1c	orange	2.00
OST19	2c	carmine	3.75
OST20	4c	olive green	4.00
OST21	5c	blue on pink	1.50
OST22	10c	black	1.50
OST23	15c	brown	12.00
OST24	30c	bistre	1.88
OST25	50c	green	1.50
OST26	\$1	red on white	24.38
OST27	\$1.50	blue on orange	70.00
OST28	\$2	dark blue on blue	33.75
OST29	\$3	blue on pink	37.50
OST31	\$60	dark green on yellow	52.50



1936-40 STOCK TRANSFER

OST32	25c	red brown	6.75
OST33	\$1	blue on flesh	18.75
OST34	\$2	blue on blue	20.63
OST35	\$5	blue on green	28.13
OST36	\$10	blue on red	16.88



STOCK TRANSFER OVERPRINTS

OST37	1c	on 25c mint NH	22.50
OST38	10c	on 25c mint NH	70.00



LUXURY TAX STAMPS

OLT1	2 1/2	M on 2m red brown	25.00
OLT2	2 1/2	mills red brown	0.95
OLT3	1c	on 1m green, mint NH	10.00
OLT4	1c	green, unused	4.00
OLT5	6c	blue, unused	6.00
OLT6	50c	orange, mint	20.00



OLT7	50c	orange, mint	35.00
------	-----	--------------	-------



GASOLINE TAX - mostly mint with gum

OGT1	3c	on 5c red	30.00
OGT2	3c	on 40c red	30.00
OGT3	3c	on 50c red	30.00
OGT4	3c	on 60c red	30.00
OGT5	3c	on 70c red	30.00
OGT6	15c	on 60c red	40.00
OGT7	15c	on 70c red	40.00
OGT8	15c	on 80c red	45.00
OGT9	15	on 90c red	55.00



GASOLINE TAX" on Luxury Tax

these are mostly mint never hinged

OGT11	5c	purple on 1c green	225.00
OGT12	6c	red on 1c green	225.00
OGT13	6c	purple on 1c green	225.00
OGT14	25c	red on 6c blue	225.00
OGT15	25c	purple on 6c blue	225.00



1949 ONTARIO VACATION PAY

OV1	1c	brown & black	2.75
OV2	2c	brown & black	3.50
OV3	3c	brown & black	7.00
OV4	4c	brown & black	5.50
OV5	5c	brown & black	7.00
OV6	10c	brown & black	7.00
OV7	25c	brown & black	10.00
OV8	50c	brown & black	35.00
OV9	\$1	brown & black	300.00
OV10	\$1	red & black	26.25
OV11	\$5	blue & black	33.75



OLT7*NH - 50c

LUXURY TAX IMPRINT BLOCK OF 8 with "BRITISH AMERICAN BANK NOTE CO. MONTREAL & OTTAWA".

Beautiful fresh mint never hinged block. 2 stamps have small natural gum skips as is normal for this issue. Cat. value as ordinary stamps is \$640 + value of imprint = at least \$800. Very Rare block - \$395



NFR46-50*NH - 1968 CARIBOU 5c

- \$1 + NFR46a,47a,48a - 5c,10c,25c - GUTTER PAIRS. F-F/VF*NH. Cat. \$128.13. very colorful - \$69



1926 Elliot-Fairchild Air Service VF*NH IMPERF PROOFS. 1 is red & yellow other is black on yellow both are on white paper. Pristine. Cat. \$1050 - \$750



Yukon Airways - 3 different First Flight covers - April 13, 1928 - First Flight Whitehorse to Carcross, Carcross to Whitehorse & Atlin to Carcross. Cat. value \$195 - **SUPER SPECIAL - \$109 for all 3 covers.**



Yukon Airways CL42DP - REVERSE DIE PROOF in black on thick card, Superb condition. 2013 Unitrade cat. value \$450 - \$350



CL40-2706 - Dec 23, 1927 FF cover Flin Flon to the Pas. Very unusual **VARIETY** - pink colour shifted to right causing white vertical line to right of frame on left. Nice Santa Claus slogan cancel. VF - \$99



CL7 on registered cover from Toronto April 8, 1926 to Red Lake via Rolling Portage. Returned via Rolling Portage April 17 and Kitchener April 21. From Berberich the Kitchener stamp dealer who was "inadvertently" sold some of the blue Elliot essays and then used them on covers. Attractive and unusual - \$250



CL42i - 25c blue Yukon Airways stamp on original complete April 13, 1928 Whitehorse Star newspaper. Bottom half shows same plane as pictured on the stamp as well as article about the flight. Cat. \$160
complete newspaper with Atlin & Whitehorse April 13, 1928 cancels - \$149
complete newspaper with Carcross & Whitehorse April 13, 1928 cancels addressed to Caribou Hotel in Carcross - \$149



CL7 on Red Lake, April 8, 1926 to Rolling Portage, April 9, 1926. - \$195

DISCOUNTS THIS PAGE:

over \$50 - 5% discount, over \$500 - 10%, over \$2500 - 15%, over \$7500 - 20%



CL52*NH - complete pane of 5 (pane 2 from a sheet). Pos. #4 shows plugged "S" in "CENTS" variety. Overprints in the 1st, 3rd and 5th column don't line up with the other 2 columns thus showing overprints that touch the mountain and that are above the mountain - this is always a popular variety when offered in pairs and here you have a whole sheet of them. Complete panes rarely seen now. Cat. value as regular stamps \$1563
 My price for the complete pane of 50 only \$995



CL49-2900 - 10c dark purple 'VIA AIR' on FF cover July 23, 1930 Edmonton to Fort McMurray. Purple octagon shaped cachet. Scarce - \$225



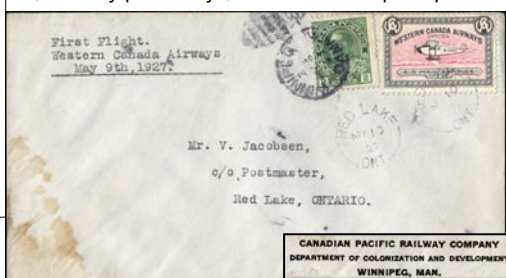
CL3 - 25c red Laurentide Air Service. F/VF* heavy hinge with light natural gum bends as is so typical for this value. Cat \$135 ... \$65



CL40-2802 Western Canada Airways. December 31, 1928 First Flight cover Sioux Lookout to Pickle Lake. Special purple cachets. **PILOT SIGNED "A H Farrington"**. Regular price - \$159.... Special - \$129



CL9d* - 25c blue on yellow background. 1926 Elliot-Fairchild Air Service complete pane of 8. Position #1 shows the very scarce **CL9c "filled wing"** variety. CL9c is *NH and catalogues \$150. Position #4 is **INVERTED** and in pair with pos #4 or pos #8 catalogs \$150. Catalogue value of the entire pane is \$525. My price only \$399 for the complete pane.



CL40h-2700 FF cover Red Lake to Rolling Portage on Official "Canadian Pacific Railway Company Department of Colonizations and development, Winnipeg, MB" cover. See inset for what's on back of cover. **Stamp has the scarce skis touch sun variety.** Cover has stain at bottom left corner. Very unusual cover - \$125